



Release Documentation FIS
Base Release 2025.01


Table of contents

TABLE OF CONTENTS	2
INTRODUCTION	3
NEW IN RELEASE 2025.01	4
TECHNICAL ENHANCEMENTS	5
RELEASE	5
FUNCTIONAL ENHANCEMENTS	8
RELEASE	8
CHANGES IN MENU OPTIONS	13
RELEASE	13
CONNECTING WITH OTHER APPLICATIONS	13
SOLVED ERROR MESSAGES	14
RELEASE	14
SUPPORT	17

<https://www.pantheon-automatisering.nl/diensten/ibm-i-diensten/fis-fms/>

Introduction


This document can be regarded as a guide for e.g. the application manager when implementing release 2025.01 of FIS within the organisation.

 *With version 2025.01 of FIS, Pantheon also releases a 2025 version of all related software products, like e-Mapping, Fixed Assets Control (FAC), Spoolfile Manager and Billing (FAK). When you move to FIS release 2025.01, you need to install the 2025 version of all software you are using - download from <https://www.pantheon-automatisering.nl/diensten/ibm-i-diensten/fis-fms/> choose 'Portaal'*

Please be aware of the following conditions and effects:

- During the installation of this release the entire FIS program library (standard name: FISOBJLIB) will be cleared and replaced. Objects you may have added after a previous installation, will be lost in the process
- If your current version of FIS is older than version 2016.01, you must load release 2016.01 or 2019.01 first and modify your data library (or libraries). Then move to version 2025.01. Please contact Pantheon first if these circumstances apply to you
- All payment and collection proposals, as well as draft, cheque and TAX proposals must be completed (including Pay Definitely / Definitely Collect) before installing FIS 2025.01 software
- Install the Easy@ccess Basepack (version **10.1.4** as supplied with this release) if it is not yet present. Check the FIS202501.zip file
- Always install the Easy @ccess panels provided, both the general (in '/Panels/Shared Files') as the FIS-specific panels (in '/Panels/FIS2000'). The online help text is loaded automatically
- Users of the Online Approval module need to install the version provided with this release (Check FIS202501.zip), version **2025.01.01**, as well as the most recent Webviewer, available on the Portal

After installing this release, you will have to run the 'Modify file library for new Release/PTF' procedure for every FIS data library on your system. During this process, the posting files will NOT be converted

 *We strongly recommend testing new software in a separate environment, especially if you use custom built software or third-party applications connected with FIS.*

Finally, for news and information worth knowing about FIS, please refer to:
<https://www.pantheon-automatisering.nl/diensten/ibm-i-diensten/fis-fms/>

New in Release 2025.01

In short, the most important features and improvements in this release. Additional information can be found in the chapter 'Functional Enhancements'

Expansion of Payment Characteristics

Introduction of the field 'Payment characteristics Extended' with a maximum size of 54 positions

New SEPA formats (Payment and Collect)

SEPA Domestic Payments can now be generated in the "PAIN 001.001.09" format. For Direct Debit format "PAIN 008.001.08" was added

Extra data in the CSV-export for VAT proposal

The CSV export from 'Proposal turnover tax declaration' now contains Debtor/Creditor data: Name, Town and country code & VAT-number

Extra data in Reconciliation interfaces

In the input parameter: Bank statement number, Batch sequence number, Costs currency, Costs amount and origin code. Output: different company/branch and description-2

Use extended Debtor name in Automatic collections

You can use Address line 1 & 2 when banks require a full match on the bank account name

Revised check on posting date in Tick off wait-accounts

The date check now corresponds with the validations in 'Input financial transactions'

Improved recognition of CAMT.053 files

CAMT files from foreign banks were not always recognized properly

Automatic processing of payment differences

When indicated, FIS now automatically makes financial transactions for payment differences during 'Tick Off' in Reconciliation

New checks for the modification of the account number for Subledgers

Existing checks were replaced by a check on zero-balance for the linked account number

Proposal turnover tax declaration

Create a report or export of all transactions in a period; independent of the declaration status

Technical enhancements

Release

File changes in the database

In this release the following data files in the FIS data library were altered:

DCAPBS	Payment schemes
DCAPLF	Log file invoice modifications
DCAPLW	Log file for Datawarehouse
DCRPBM	Tick Off data financial transactions
DCPPTM	Transaction data – General transactions
DCPPDM	Transaction data Db/Cr – General transactions
FAM21	Financial transactions
FAMS21	Financial transactions (Archive)
FAMW180	Work file postings
FKTPFK	Invoices Kofax
FKTPFS	Invoices Kofax Save
FAGLKN2/4	Notes / Payment references (Logical)

Transfer to a new operating system

For Release 2025.01 of FIS (and all its PTF's) version **V7R4M0** of the IBM Operating system is required. This condition is checked during the installation process.

Note: other OS-conditions may apply for e-Products (e.g. e-Mapping, SFM and FAC) linked to FIS.

If you have questions on this subject, please contact Pantheon Automatisering. Call +31 513 657 357, or send a mail to FISFMSAdministratie@pantheon-automatisering.nl

Upgrade Easy@ccess software

If it is not yet present on your system, you need to install Basepack **10.1.4** - also known as 'Rocket Modern eXperience Desktop Client'. Please refer to the loading instructions for additional information.

Always install the Easy@ccess panels as supplied with this release; panel sets always contain all panels. Remember that panels are distributed in two files: general panels (in '/Panels/Shared Files') and FIS panels (in '/Panels/FIS2000').

Also check the version of the Seagull License Manager (LMS) – you will find all details in the loading instructions. If an update is required, the software can be downloaded from the customer portal. <https://www.pantheon-automatisering.nl/diensten/ibm-i-diensten/fis-fms/> select 'Portaal'

Select your browser for the HTML Help texts

In FIS function key <F1> triggers the Help function which displays help text in a browser.

Not all browsers present the help text correctly. If you encounter problems, you can solve this problem by using an alternative browser for FIS help text. Refer to your settings in the **defaults.ini** file (standard settings) or **custom.ini** file (your own settings) to indicate your browser of choice using the **BrowserHelp** keyword in the section [HELP]

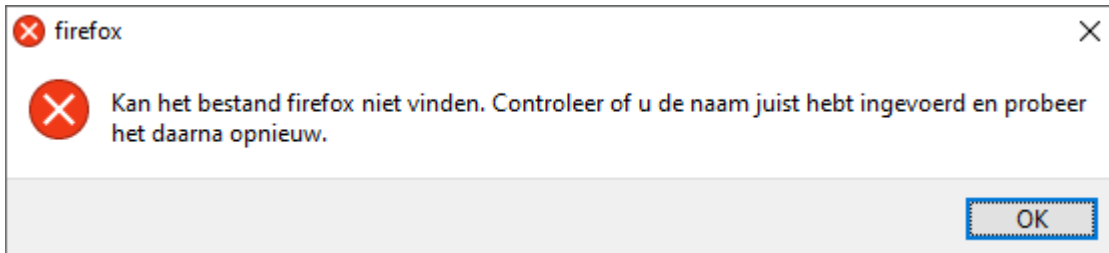
The options are:

BrowserHelp="1" (Chrome)
BrowserHelp="2" (Internet Explorer)
BrowserHelp="3" (Edge)
BrowserHelp="4" (FireFox)

Example:

```
[HELP]
HelpSystem="HTML"
HelpFolderWindows="C:\Easy @ccess\app\"
HelpFolderJava="<webserverpad>/"
BrowserHelp="4"
```

If the selected browser is not installed on your pc/laptop, the following message is displayed:



Functional enhancements

Release

Expansion of Payment Characteristics

As from this release a second item for “Payment Characteristics” has been added to FIS, with a maximum length of 54 characters. In financial transactions a new field with this length has been introduced – the existing field of 20 characters remains available.

If you want to use this new input field, you need to place it on your input screen(s) for financial transactions (option: “Layout financial transaction screens”).

This alternative, extended field for payments characteristics is also available when you use applications like e-Transaction or e-Mapping to generate financial transactions for FIS.

Note: you can only use one of the two input fields.

On information screens in FIS the new field cannot always be displayed in its entire length. For prints and exports you can choose between the smaller and the larger field in most cases.

The extended characteristics are also available in FIS interfaces – please check the Interfaces manual. Parameter layout does not change so in all cases the extended payment characteristics were added to the existing layout. If you use long payment characteristics (longer than 20 characters) the standard field for payment characteristics will only contain the first 20 characters.

New SEPA Payment format (Domestic payments)

As from release 2012 FIS creates SEPA payment files based on the so-called PAIN 001.001.03 format. You can keep using this format but in release 2025.01 you can also select a new format: the PAIN 001.001.09 definition. Both types of payment files can be used in the Euro zone.

As from the fourth quarter of 2025 most EU-banks intend to switch to the 001.001.09 format as their preferred format. At that time they are expected to communicate about their support of the current 001.001.03-format.

The selection of the payment format is done through the menu option “Maintain general data”. Choose a company and then select “Bank data - Per bank”.

Bank/giro code	Bank	Hash check	
Output medium	PC-file		
Curr. bank	SEPA	Variant	30

The format selection is made on the detail screen. Select for 'SEPA' as your currency bank followed by the format variant of your choice (30 or 39). All details are in the Help text.

The main modifications concern the address data of the receiving party, as they need to be more specific. FIS only stores a small number of the components available, so the address information in the payment file remains limited.

The table below shows the different address components in both payment formats:

PAIN 001.001.03	PAIN 001.001.09
Name	Name
Address Line (1 tot maximaal 7 keer)	Department Subdepartment Street Name Building Name Building Number Floor Room Postal Code Town Name Town Location Name District Name Country Sub Division
Country Code	Country Code

For the 001.001.09-format FIS uses:

- Street Name,
- Postal code,
- Town Name

Street Name

Because 'Street name' is not a fixed field in FIS, the following selections are made:

Address data		Selection for 'Street name'
Address Line 1	Filled	
Address Line 2	Filled	
Address Line 3	Filled	X

Address data		Selection for 'Street name'
Address Line 1	Filled	
Address Line 2	<i>(empty)</i>	
Address Line 3	Filled	X

Address data		Selection for 'Street name'
Address Line 1	Filled	
Address Line 2	Filled	X
Address Line 3	(empty)	

Address data		Selection for 'Street name'
Address Line 1	Filled	Element 'Street name' is not included in the payment file
Address Line 2	(empty)	
Address Line 3	(empty)	

Town Name and Postal Code

FIS has an indicator for 'Town Name': address line 4 or 5. This indicator is optional but you need to use it for creditors you intend to pay through 'Automatic payments' in FIS. The same condition applies for 'Postal Code'.

New SEPA Collection format (Direct Debit)

For SEPA Automatic collections similar changes have been made. Up to release 2025.01 the PAIN 008.001.02 format was available. You can use this format until further notice, but FIS release 2025.01 also contains a new collection format: PAIN 008.001.08.

As from the fourth quarter of 2025 most EU-banks intend to switch to this 008.001.08 format as their preferred format. At that time they are expected to communicate about their support of the current 008.001.02-format.

The selection of the collection format is done through the menu option "Maintain general data". Choose a company and then select "Bank data - Per bank". On the detail screen of collection banks you select 'SEPA' for 'Currency bank' and the format you wish (Variant 20 for 008.001.02 or variant 28 for 008.001.08). All details are in the Help text.

Code bank/giro	Bank	Hash-controle	
Uitvoermedium	PC-file	IBAN gebruiken	
Deviezenbank	SEPA	Variant	28

The modifications in format 008.001.08 (Variant 28) also relate to the address data of the debtors and are similar to the changes in SEPA-payments – **please refer to the details of the previous chapter on payments**

Please keep in mind that the address data of debtors can be stored in different locations. FIS uses the following steps to retrieve the data used in collection files:

1^o choice: name and address data is retrieved from the mandate. *If not present:*

2^o choice: Name and Town of the 'Account holder' from the bank master data. *If not present:*

3^o choice: name and address data from the debtor master data

For both automatic payments as for automatic collection, please be aware:

- ☞ *Evaluate the address data of your creditors before you switch to the new collection and/or payment formats. Apply one of the standard approaches described above; collections/payments without correct address details can be refused by your bank!*

Extra columns in CSV-export in 'Proposal turnover tax declaration'

In order to make Debtors/Creditors more recognizable, the CSV export now includes extra columns:

- Address line-1,
- Town (if indicated),
- Country code and VAT-number
- VAT-amount
- Invoice amount including VAT

Extra master data available in interfaces in Reconciliation

If you use interfaces for the Reconciliation module of FIS, more data fields are available - both input and output. The interfaces involved: DCRECONIN, DCRECONIZ, DCRECONIF and DCRECONSP.

FIS provides additional bank data:

- Number of the bank statement
- Batch sequence number
- Currency code of the costs
- Cost amount
- Origin code

Refer to the Interfaces manual for all technical details

Interface DCRECONIN allows you to provide FIS with financial data that can be used in financial transactions. As from release 2025.01 the following items can be returned to FIS from the interface: 'Alternative company', 'Alternative branch' and 'Description-2'.

Use extended Debtor name in Automatic collections

Some banks apply strict validations on the name of the bank account holder. When the 20 positions in the bank account master data are not enough, you can use an indicator to use Address-1 & 2 instead select (in "Bank data - Per bank")

Date control in Tick Off Wait accounts

On the screen 'Tick Off Wait-accounts - User Identifications' the validation of the posting date is now in line with the checks in 'Input financial transactions'. The validation now includes the number of days 'plus' and 'minus' from the settings in 'List file data'

Improvement of recognition of CAMT files

Some (mostly foreign) banks include a large amount of data in their CAMT files. This could prevent FIS from recognizing the file type properly. The validation had been modified to improve recognition

Automatic processing of payment differences

Once the setup (account number and amount limits) is present FIS will now automatically create financial transactions for payment differences from the Reconciliation module.

Modified validation on the modification of the account number of a Subledger

The existing validation has been replaced by a check of the account balance. The account number for a subledger can be entered or changed if there is a zero balance for the account number in question

Proposal turnover tax declaration

A new 'Control Report' is now available in this program. It allows you to create a report or an export of all transactions in a period, independent of the declaration status.

Note: you cannot select this option and create a declaration proposal from it.

Changes in menu options

Release

No changes

Connecting with other applications

All changes described so far, may affect connections with other applications on your PowerSystem. All existing interfaces are supported; in most cases new fields have been added at the end of parameter strings.

Additional information and more technical details are available in the handbook Interfaces in the Online Help text.



Together with FIS a 2025.01 release for all FIS related applications has become available. If you upgrade one of these applications to the 2025.01 level, you need to install the 2025.01 release of all other products as well.

If you have any questions regarding connections with FIS, please contact Pantheon Automatisering by mail, via FISFMSAdministratie@pantheon-automatisering.nl.

For up-to-date information; go to:

<https://www.pantheon-automatisering.nl/diensten/ibm-i-diensten/fis-fms/>

Solved error messages

In the list below, you can find all messages that have been solved for the corresponding release. The support-ID or internal R&D number is assigned to each of these messages.

Release

Menu option	Number	Description
General	FIS2501	General task for base release 2025
Print payment proposal	ACC282	The CSV-export appeared to be incomplete
Overview N.A.T.-data	FIS138	The report now includes the Mandate ID
Debtors/Creditors	FIS150	Expansion of Payment Characteristics
Debtors/Creditors	FIS151	Replace references to 'EG' by 'EU'
Automatic collection	FIS152	Use extended Debtor name in automatic collections
DB/CR screen information	FIS156	Exchange input fields for Dossier number and Payment Characteristics
Administration rejected invoices Online Approval	FIS157	Easy@ccess panel error on subfile Map/Drop
Interfaces	FIS158	Not all master data was available in the 'read' interfaces FAGLREK2 and FAGLSTN
Maintain accounts	FIS159	New interface (FAG035IN) in 'Maintain accounts'
Input financial transactions	FIS160	Some validation were removed to enable a Dutch day book being used in a Belgian environment. You can now use 'Document-oriented input invoices' using a day book that was not defined as a day book for invoices
Print payment/collection proposal	FIS161	The item 'Description/Payment Characteristics/Reference' was not always included completely in the CSV-Export
Tick off wait-accounts	FIS162	The posting date is also validated based on the number of days plus/minus from the general library settings
Maintain accounts	FIS163	Adding of changing the account number of a subledger is allowed only when the account number balance is zero

Menu option	Number	Description
Work With Reconciliation Files (Add new file)	FIS165	Improved recognition of CAMT files
Automatic collection	FIS166	An error could occur in the XML file when BIC codes were not present in FIS master data
Proposal turnover tax declaration	FIS167	The CSV-export contained too many invoices because the selection on VAT-code was not included
Work With Reconciliation Files (Add new file)	FIS168	When a 'Group designation' was not used in any bank account, the import of a CAMT-file could result in error
Supply XML audit file financial	FIS170	(XML-Auditfile 3.2) For missing posting dates the century value 19xx was selected instead of 20xx
Print payment proposal (Debtors)	FIS173	Pre-payments were not always included in the proposal. This is corrected when using the selection for 'domiciled' or 'credit note'
Alter payment proposal	FIS174	The indicator for multiple bank accounts ('+') did not work correctly
Alter collection proposal	FIS175	The mandate information was not always shown
Proposal turnover tax declaration	FIS176	When removing a previous proposal, not all invoices were released properly
Proposal turnover tax declaration	FIS177	New columns added to the CSV-export: first address line, town, land code and VAT number
Reconciliation – Tick off	FIS178	Additional item from the reconciliation data were made available in the recon interfaces
Maintenance reconciliation data per bank – Posting data	FIS179	When no master data was present, the program could end in error
Reconciliation	FIS180	Show opening and closing balance in "Work With Reconciliation Files"
Reconciliation	FIS181	When settings and margins are present, automatically create transactions for payment differences during 'Tick-off'
Reconciliation	FIS184	Under circumstances, the specification lines were moved as a result of the use of interfaces

Menu option	Number	Description
Record payments	FIS186	In the transactions created for payment differences, some fields were field unnecessarily
General overviews	FIS187	CSV exports started from the job-scheduler (planning) could end in error
Interfaces	FIS188	More fields are returned by interface DCRECONIN. Refer to the Interfaces manual for all details
Automatic payments – domestic	FIS189	Introduction of the PAIN 001.001.09 SEPA payment format, for domestic payments in the Euro zone
Reconciliation	FIS190	The authorization checks during the import of CAMT- and other reconciliation files were removed
Reconciliation	FIS191	During the import of a larger amounts of CAMT files could end in error when an existing file name was created. New software now finds a valid name.
Proposal turnover tax declaration	FIS192	New 'Control Report' to create a listing or export of all transactions in a period – independent of their declaration status
Automatic collections	FIS195	Introductions of the PAIN 008.001.08 format for Direct Debit
DB/CR screen information	FIS196	Under circumstances a wrong Easy@ccess panel was used on 'Screen Information Postings - Dossier/invoice'
FIS General	FIS197	A 'loop' situation could occur for specific menu options when FIS was not connected to a valid data library

Support

In order to guarantee the continuity of your applications, Pantheon Automatisering offers various types of support. What to do if you want to use these services?

- For a problem involving Pantheon standard applications, please contact the Support Desk by mail: FISFMSAdministratie@pantheon-automatisering.nl A concise problem description is sufficient for the Service Desk to tackle the problem (within opening hours).
- For support during the installation and/or implementation of Pantheon applications you need to make a reservation; please contact us 14 days in advance. This type of support can be given at any time (during/after business hours), on location or by phone. For these services fixed tariffs apply.

You can reach Pantheon by phone: **+31 513 657 357**

You can also use this number, should you require additional information on other types of support, such as training and advice.